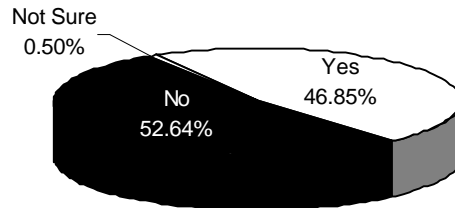


**The Survey of American College Students:  
Student Library Research Practices & Skills**

**Chapter One: Percentage of students who have ever been required to turn in a paper exceeding approximately 10 double spaced typed pages in length for any of their classes**

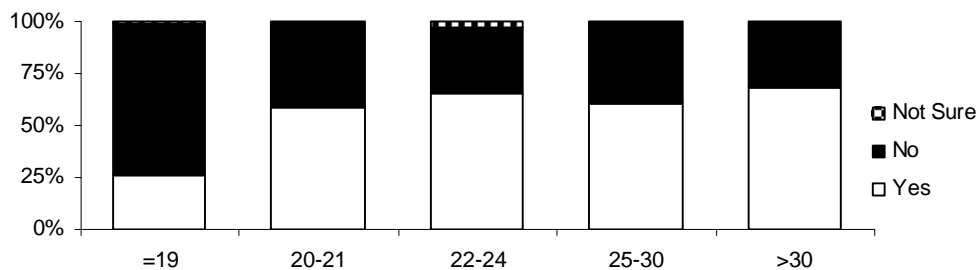
**Table 1.1: Percentage of students who have ever been required to turn in a paper exceeding approximately 10 double spaced typed pages in length for any of their classes**

	Yes	No	Not Sure
<b>Entire Sample</b>	46.85%	52.64%	0.50%



**Table 1.2: Percentage of students who have ever been required to turn in a paper exceeding approximately 10 double spaced typed pages in length for any of their classes, Broken Out by Age of the Student**

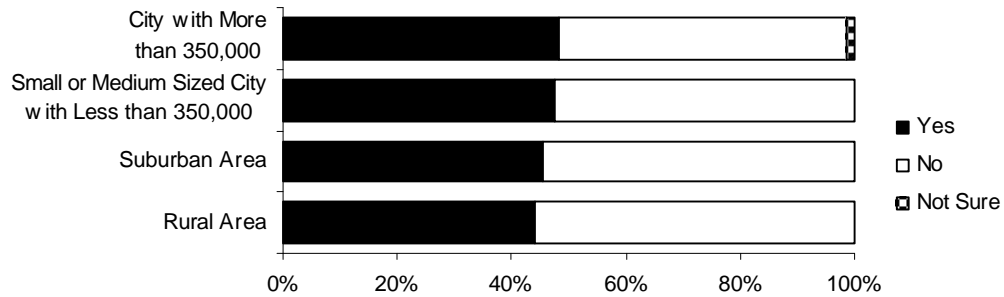
Years of Age	Yes	No	Not Sure
<b>19 or younger</b>	25.81%	73.55%	0.65%
<b>20-21</b>	59.09%	40.91%	0.00%
<b>22-24</b>	65.63%	31.25%	3.13%
<b>25-30</b>	60.47%	39.53%	0.00%
<b>Over 30</b>	68.00%	32.00%	0.00%



**The Survey of American College Students:  
Student Library Research Practices & Skills**

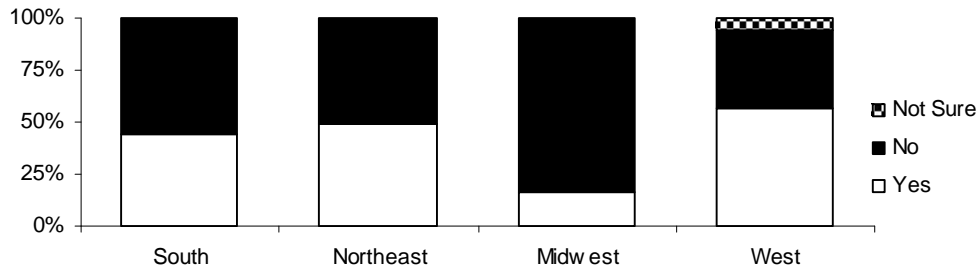
**Table 1.3: Percentage of students who have ever been required to turn in a paper exceeding approximately 10 double spaced typed pages in length for any of their classes, Broken Out by Population Intensity of the Place of Origin**

Population Intensity of Place of Origin of the Student	Yes	No	Not Sure
City with more than 350,000	48.15%	50.62%	1.23%
Small or Medium Sized City with less than 350,000	47.50%	52.50%	0.00%
Suburban Area	45.45%	54.55%	0.00%
Rural Area	43.96%	56.04%	0.00%



**Table 1.4: Percentage of students who have ever been required to turn in a paper exceeding approximately 10 double spaced typed pages in length for any of their classes, Broken Out by Geographic Region of Origin of the Student**

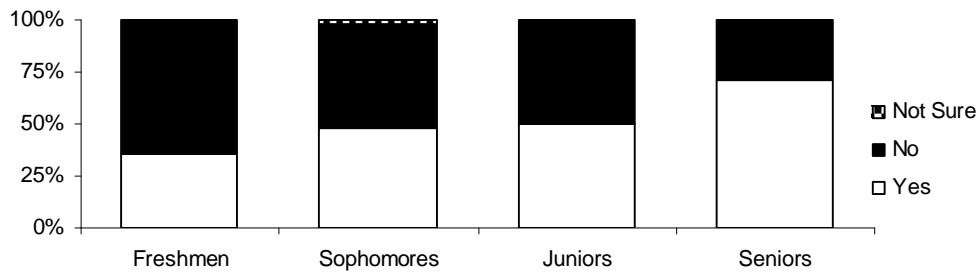
Region of the Country Where the Student Grew Up	Yes	No	Not Sure
South	44.44%	55.56%	0.00%
Northeast	48.60%	51.40%	0.00%
Midwest	16.67%	83.33%	0.00%
West	56.76%	37.84%	5.41%



**The Survey of American College Students:  
Student Library Research Practices & Skills**

**Table 1.5: Percentage of students who have ever been required to turn in a paper exceeding approximately 10 double spaced typed pages in length for any of their classes, Broken Out by Freshmen, Sophomores, Juniors & Seniors**

Year or Grade in School	Yes	No	Not Sure
Freshmen	35.56%	64.00%	0.44%
Sophomores	48.48%	50.00%	1.52%
Juniors	50.00%	50.00%	0.00%
Seniors	71.58%	28.42%	0.00%



**Table 1.6: Percentage of students who have ever been required to turn in a paper exceeding approximately 10 double spaced typed pages in length for any of their classes, Broken Out by Income Level of the Student's Family of Origin**

Annual Income of Student's Family of Origin	Yes	No	Not Sure
Less than \$40,000	44.13%	55.40%	0.47%
\$40,00 to \$75,000	47.62%	51.59%	0.79%
\$75,000+ to \$150,000	66.67%	33.33%	0.00%
More than \$150,000	51.22%	48.78%	0.00%

